

## Step 1: Setting up TCP/IP on the Computer

If the TCP/IP of your computer is already set, proceed to the next step. If it is not set, consult with your network administrator. Regarding the configuration of TCP/IP, refer to the help menu or documentation for Windows.

## Step 2: Setting up TCP/IP of the Printer

You need to set the IP Address, Subnet Mask and Default Gateway for the printer. It can be set by using one of the following two methods.

- Using the DHCP server
- Using the Network Setup Tool

If the administrator manages the network with a DHCP server, it will automatically assign an IP Address, Subnet Mask and Default Gateway. These can be viewed by printing out the configuration page (see below).

You may need to contact your network administrator to set up the TCP/IP address.

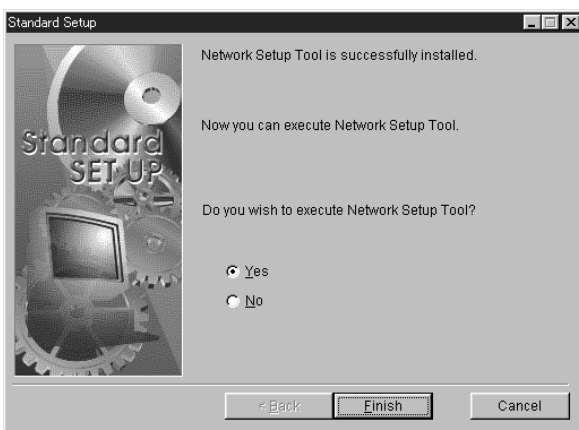
The following is the method using the Network Setup Tool.

- 1 Turn the printer on.
- 2 Press **PRINT/RESET** button on the printer panel **more than 2 seconds and less than 5 seconds** to print the configuration page.
- 3 Confirm the MAC address on the configuration page.
- 4 Insert the printer CD-ROM into the CD-ROM drive. The CD-ROM launches automatically.

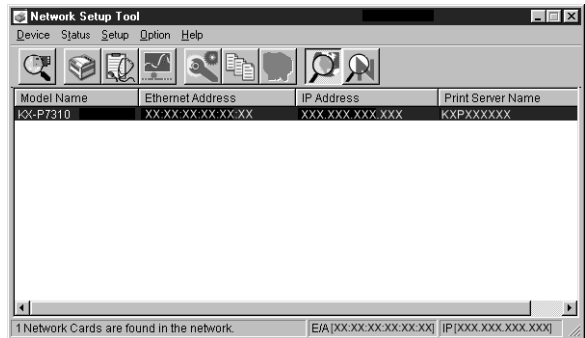
### NOTE

- If the CD-ROM does not launch automatically, double click **My computer** icon, then double click the CD-ROM icon.  
(For Windows XP / Windows Server 2003, click **[Start]** and click **My Computer**, then double click the CD-ROM drive.)

- 5 (Click language and) click **KX-P7310** and click **Install Network Utilities**.
- 6 Follow the instructions until the screen below is displayed.



- 7 Click on the **Yes** check button, and then click **[Finish]**.
- 8 Click the KX-P7310 printer you want to set up in the list.  
To select the printer, refer to the MAC address confirmed at step 3.



- 9 Click the **Setup** menu and select **Network Setup....**
- 10 Click the **TCP/IP** tab.
- 11 Remove the check mark from **Use DHCP/BOOTP** and **Use RARP** check box, then enter the IP Address, Subnet Mask and Default Gateway. Click **[OK]**.
- 12 Confirm the setting and click **[OK]**.  
You will see the message "Do you wish to send the setting to Network Printer?".
- 13 Click **[OK]**.
- 14 Click **Device** menu and select **Exit**.

## Step 3: Installing the Printer Driver on the Computer

- 1 Confirm the printer is ready for printing.
- 2 Insert the printer CD-ROM disk into the CD-ROM drive.  
The CD-ROM launches automatically.

### NOTE

- If the CD-ROM does not launch automatically, double click **My computer** icon, then double click the CD-ROM icon.  
(For Windows XP / Windows Server 2003, click **[Start]** and click **My Computer**, then double click the CD-ROM drive.)

- 3 (Click language and) click your printer.
- 4 Click **Install Printer driver and Utilities**.  
The **License Agreement** window is displayed.
- 5 Click **[Yes]**.
- 6 Click **Quick Printer Setup** and click **[Next >]**.

7 Click on the **Select the Network port for KX-P7310** check button and click the printer assigned the IP address in the previous step 2, then click **[Next >]**. The **Select installed options** window is displayed.

8 Click on the check box for the installed options in your printer, then Click **[Next >]**. The Setup program starts installing the printer driver and utilities. The **InstallShield Wizard Complete** window is displayed.

9 Click **[Finish]**.

#### NOTE

- Change the spool setting to disable bi-directional support in the printer driver as follows:

For Windows 95\*<sup>1</sup> / Windows 98\*<sup>2</sup> / Windows Me\*<sup>3</sup>

- (1) Display the printers folder (Start-Settings-Printers).
- (2) Right click the printer and select **Properties**.
- (3) Click the **Details** tab and click **Spool Settings....**
- (4) Click on the **Disable bi-directional support for this printer** check box.

For Windows NT® 4.0\*<sup>4</sup> / Windows 2000\*<sup>5</sup>

- (1) Display the printers folder (Start-Settings-Printers).
- (2) Right click the printer and select **Properties**.
- (3) Click the **Ports** tab.
- (4) Click **Enable bidirectional support** to remove the check mark of the check box.

For Windows XP / Windows Server 2003

- (1) Display the printers folder.  
Windows XP Professional / Windows Server 2003:  
Start-Printers and Faxes  
Windows Home:  
Start-Control Panel-Printers and Other Hardware-  
Printers and Faxes
- (2) Right click the printer and select **Properties**.
- (3) Click the **Ports** tab.
- (4) Click **Enable bidirectional support** to remove the check mark from the check box.

\*<sup>1</sup> Microsoft® Windows® 95 operating system (hereafter Windows 95)

\*<sup>2</sup> Microsoft® Windows® 98 operating system (hereafter Windows 98)

\*<sup>3</sup> Microsoft® Windows® Millennium Edition operating system (hereafter Windows Me)

\*<sup>4</sup> Microsoft® Windows NT® operating system Version 4.0 (hereafter Windows NT 4.0)

\*<sup>5</sup> Microsoft® Windows® 2000 operating system (hereafter Windows 2000)

## Installing the Web Administrative Tool

Web Administrative Tool enables the ability to manage the device connected to the network. For the installation and usage, see the Readme as follows:

1 Insert the printer CD-ROM in your CD-ROM drive. The CD-ROM launches automatically.

#### NOTE

- If the CD-ROM does not launch automatically, double click **My computer** icon, then double click the CD-ROM icon.  
(For Windows XP / Windows Server 2003, click **[Start]** and click **My Computer**, then double click the CD-ROM drive.)

2 (Click language and) click **Browse CD-ROM**.

3 Double click the **Readme.txt** (Network\WebTool\English\Readme.txt).

4 See the System requirements.  
(To install the Web Administrative Tool, Web server is needed. Refer to the help menu of Windows to install the Web server.)

#### NOTE

- For the IP address of the SMTP server, consult with your network administrator.

## Setup for Network Printing (For Mac)

### Step 1: Installing the PPD File

1 Insert the printer CD-ROM into the CD-ROM drive.

2 Double click the CD-ROM icon, then double click **Mac OS** or **Mac OS X** folder depending on the operating system (see below).

**Mac OS:** Mac OS 8.5 - Mac OS 9.2

**Mac OS X:** Mac OS X 10.1 - Mac OS X 10.2

3 Double click the **English** folder and the **PPD Installer** icon to install the printer's PPD file, USB printer class driver.

4 Follow the instructions on the screen to complete the installation.